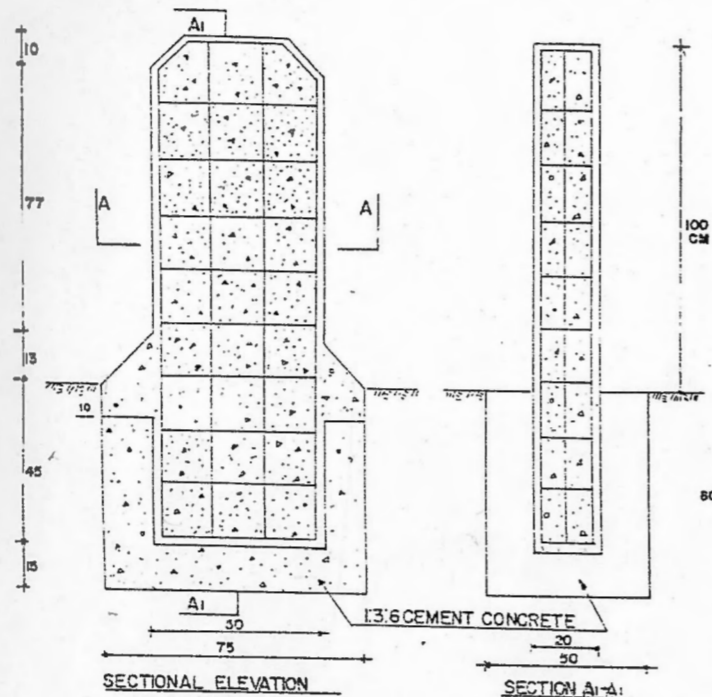


DISTANCE SIGNS

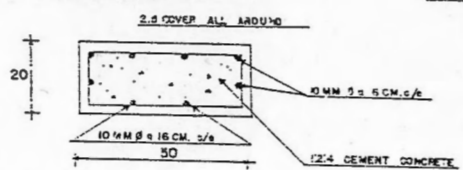
SCALE 1:10

5TH KILOMETRE STONE



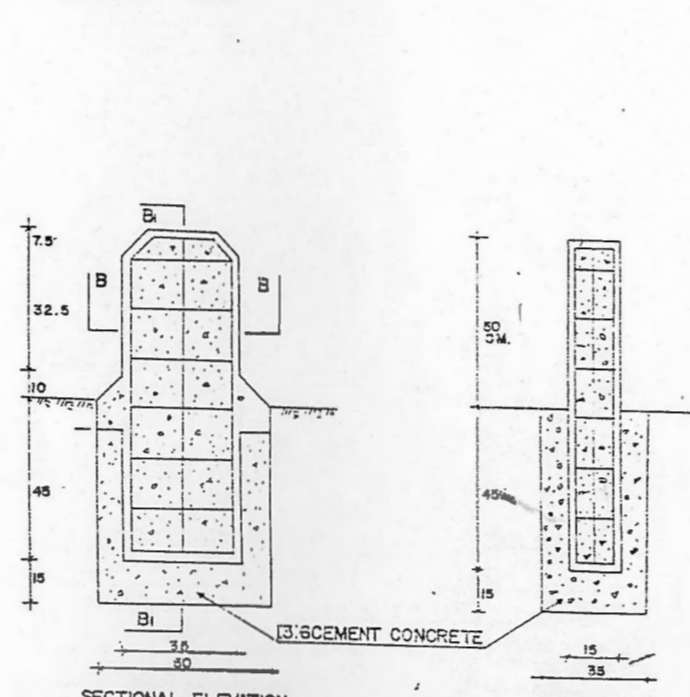
SECTIONAL ELEVATION

SECTION A-A



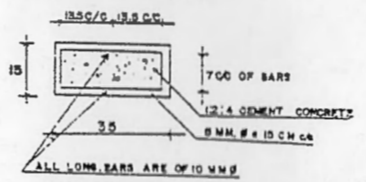
SECTION A-A

KILOMETRE STONE



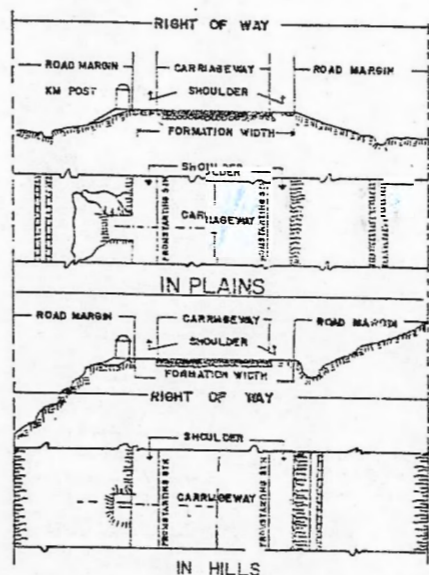
SECTIONAL ELEVATION

SECTION B-B



SECTION B-B

LOCATION OF K.M. STONES



NOTES ON DISTANCE SIGNS

1. THE K.M. POST WILL SHOW THE NAME AND DISTANCE IN ALPHABETICS OF INTERMEDIATE STATIONS ONLY THE NAME BEING ON TOP AND THE DISTANCE AT THE BOTTOM. THE INTERMEDIATE STATION COMING AHEAD WILL BE SHOWN ON EACH FACE.
2. ALTERNATE K.M. POST WILL BE IN NEPALI AND ENGLISH LANGUAGES.
3. THE 5TH K.M. POST WILL HAVE THE NAME AND DISTANCE IN K.M. OF TERMINAL JUNCTION ON ONE FACE AND THE STARTING STATION ON THE OTHER FACE.
4. THE 5TH K.M. POST WILL HAVE INSCRIPTION BOTH IN NEPALI AND ENGLISH LANGUAGES. NEPALI LANGUAGES BEING ON TOP.
5. THE TOP TRANSVERSAL PORTION OF A 5TH K.M. POST WILL SHOW THE R.L. IN METRES ON BOTH SIDES.

LETTERING

1. STANDARD DEPARTMENT SCRIPT WILL BE UTILISED FOR NEPALI LANGUAGES SIMILARLY ROMAN SCRIPT WILL BE USED FOR ENGLISH LANGUAGES.
2. K.M. POST WILL HAVE 1.5 CM. LETTERS APPROX. HIGHWAYS.
3. 5TH K.M. POST WILL HAVE 10 CM. LETTERS AND 10 CM. NUMERALS.

COLORINGS

1. THE BACKGROUND OF THE POSTS WILL BE PAINTED IN SHARPLESS WHITE PAINT.
2. DEEP BLACK PAINT WILL BE USED FOR LETTERS AND NUMERALS.
3. THE R.L. WILL BE PAINTED IN RED COLOR.
4. ALL PAINTS TO BE USED WILL BE WATER PROOF ENAMEL PAINT.

ORIENTATIONS

THE POST WILL BE FIXED IN 13:6 CEMENT CONCRETE AS SHOWN AND WILL BE FIXED IN SUCH A WAY THAT THEY ARE OUTSIDE THE ROAD WIDTH CLEARLY 15 CM FROM EITHER SIDE AND NOT OBSTRUCTING THE FLOW OF TRAFFIC. THE POST WILL BE PLANTED AT RIGHT ANGLES TO THE CENTRE OF THE ROAD AS SHOWN.

LOCATION

1. IN HILLS TERRAIN THE POST WILL BE LOCATED ON THE HILLSIDE OF THE ROAD IN FREE SPACES.
2. IN PLAIN AREA THE POST WILL BE LOCATED ON THE LEFT SIDE AS ONE PROCEEDS FROM THE STARTING STATION TOWARDS THE TERMINAL STATION.

His Majesty's Government of Nepal
MINISTRY OF WORKS AND TRANSPORT
DEPARTMENT OF ROADS

STD. KM. SIGNS

RECOMMENDED

[Signature]
SUPUT ENGINEER

APPROVED

[Signature]
CHIEF ENGINEER

DWG. NO. P.36
DSS. 026